

Test Method

Potency Analysis by
High Performance Liquid Chromatography

Cannabinoid Potency Results

- Stronger than advertised
- Exactly as advertised
- Weaker than advertised

Test Accreditation #: 77802

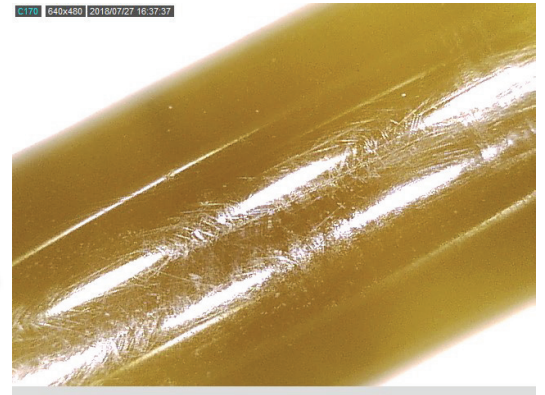
Test Certificate #: 110035-001

Sample Details
Product: Tasty Hemp Oil: Tasty Drops
 1oz 300mg
Sample: 300SP A
LOT: FG001778
Product Type: Full-Spectrum
Sampled Product: Infused Product
Method: FE04 HPLC1100-1
Molds/Pests: N/A

Test Conditions
Scale: XS205-MI2
Temp.: 23.1 °C
Baro Pressure: 983.1 hPa

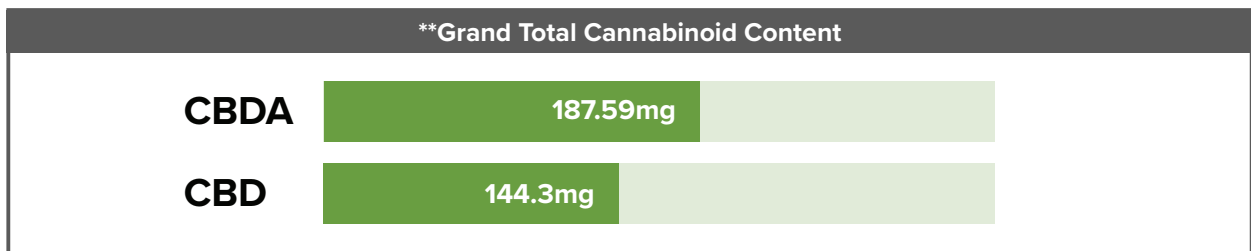
Sample ID#: 110035

Test Date: 07/27/2018



Simple Overview
Advertised: 300mg CBD per 1oz (28.86g)
Results: 6.5mg CBDA + 5mg CBD per 1g
****Grand Total:** 331.89mg CBD/CBDA per 1oz

Test Compounds	CBDA	CBD	TOTAL	CBD Activation	THC
Amount	6.5 mg/g	5.0 mg/g	11.5 mg/g	43%	≤0.3%†
Min. Value	0.1 mg/g	0.1 mg/g	-	-	-
Amount per Serving~	6.5 mg/g	5.0 mg/g	11.5 mg/g	Serving Size~: 1g	-
Uncertainty‡	±5% RSD	±5% RSD	±5% RSD	-	-



†Uncertainty measurement is for the test procedure and the instrument used; and is calculated in accordance with the ISO "Guide of Uncertainty in Measurement" (GUM) Test Results and uncertainty are only representative of the sample submit to Iron Laboratories. Uncertainty does not account for any uncertainty in the sampling. The measurement of uncertainty is the expanded uncertainty and is an estimate of uncertainty calculated with normal distribution and a coverage factor of 2 (K=2) to approximate a 95% confidence level.

All lab testing is performed by a third party facility at one of the labs listed below. The results are taken from a sample of this product. This Certificate of Analysis (COA) is for internal use only and shall not be replicated or shared without written approval from CBD Guru.

**Grand Total is determined by calculating the results from the sample size to the total product size.

%RSD = Relative Standard Deviation Min. Value = Minimum Detectable Amount

†This passes our quality control guidelines for non-psychoactive industrial hemp oil. For questions or concerns, please contact us.



ISO/IEC 17025:2005 Accredited



Management Signature